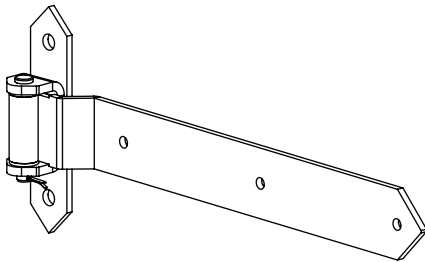
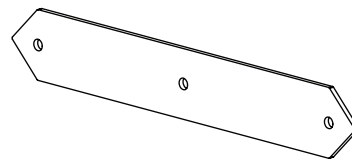


### 1. Identifying the Parts

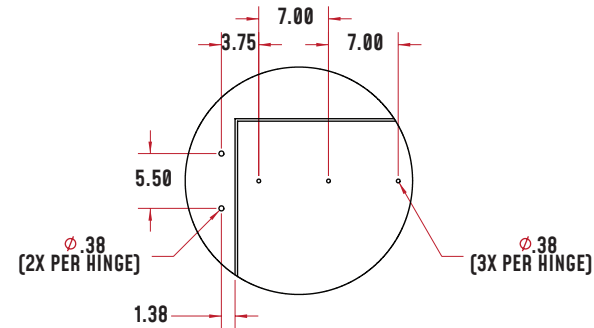


**1035 HINGE**  
1035.00266BLK

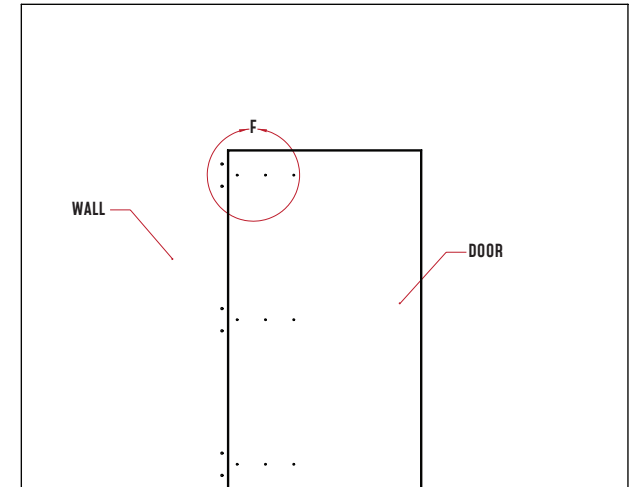


**1035 BACK PLATE**  
1035.00241BLK

### 2. Prepare Door



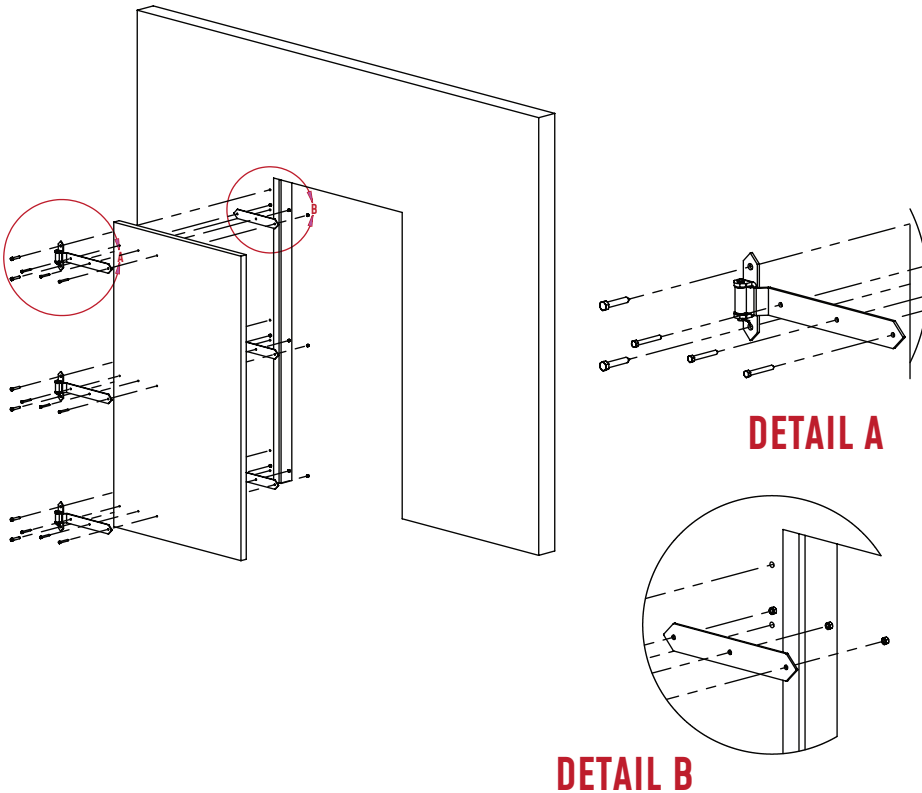
**DETAIL F**  
**SCALE 1 : 10**



1. Drill 3/8" clearance holes through entire thickness of door(s) according to dimensions in drawing.
2. Drill 3/8" pilot holes ~2" deep into door jamb of door. Ensure that mounting location is fastening to structural studs.



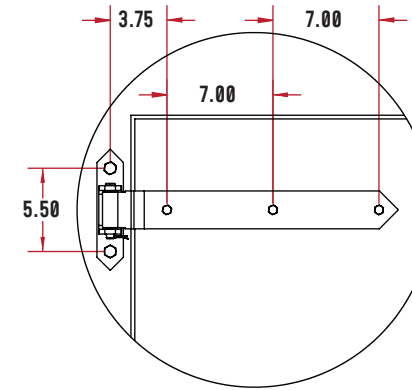
**3. Attach Hinge**



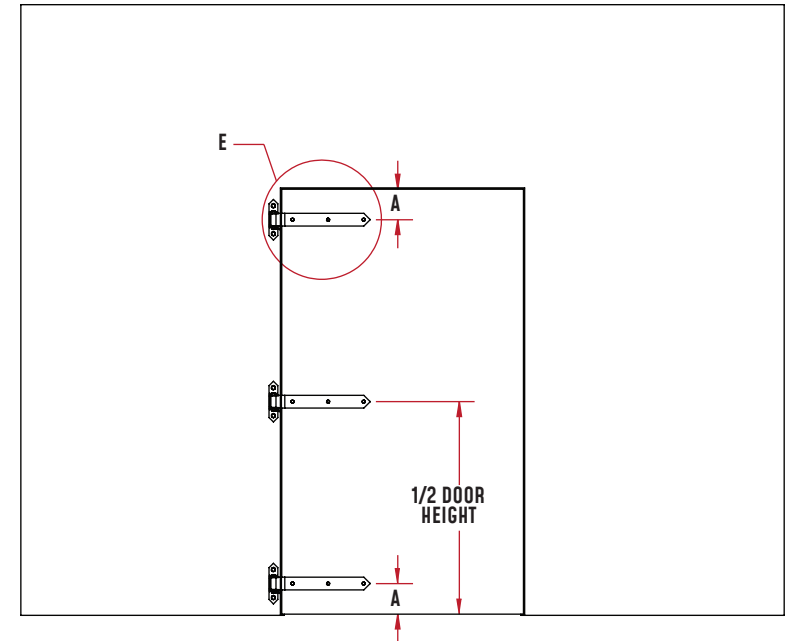
1. Attach hinge strap to door using 3/8"-16 bolts (3X per hinge) with length of the thickness of the door plus 1" (ex: door thickness = 2", bolt length = 3"). The door should be "sandwiched" between hinge strap and back plate provided.

2. Hang door in frame using 1/2" lag bolts with minimum length of 3" (2X per hinge) fastened to pre-drilled pilot holes. For reliable, accurate results, utilize shims and spacers placed around perimeter of door for consistent spacing while hanging.

**3. Attach Hinge**



**DETAIL E**  
**SCALE 1 : 8**



1. The top and bottom strap hinges (Dimension "A") can range between 3" to 8"
2. The middle strap hinge should be places in a location roughly 1/2 the door height.