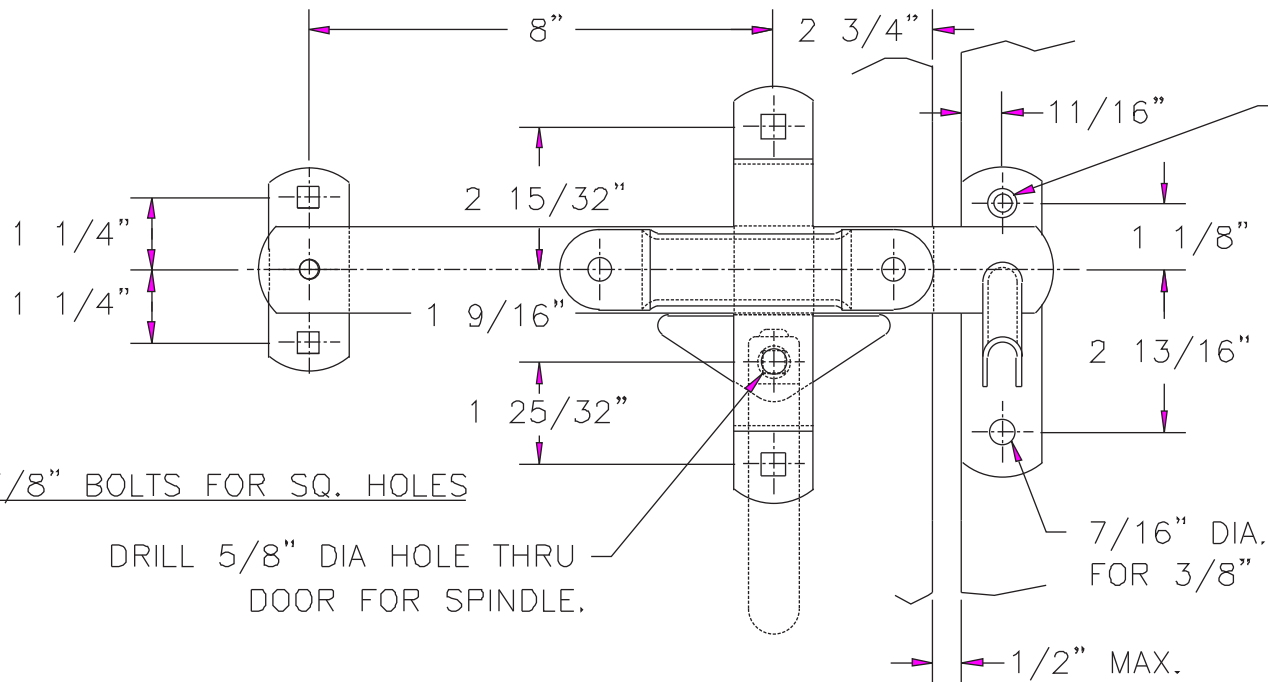


NOTE:
MAX DOOR
THICKNESS = 3"



5/16" DIA. HOLE
FOR 1/4" F.H. MACH.
SCR. OR #14 WOOD SCR.

7/16" DIA. HOLE
FOR 3/8" BOLT

USE 3/8" BOLTS FOR SQ. HOLES

DRILL 5/8" DIA HOLE THRU
DOOR FOR SPINDLE.