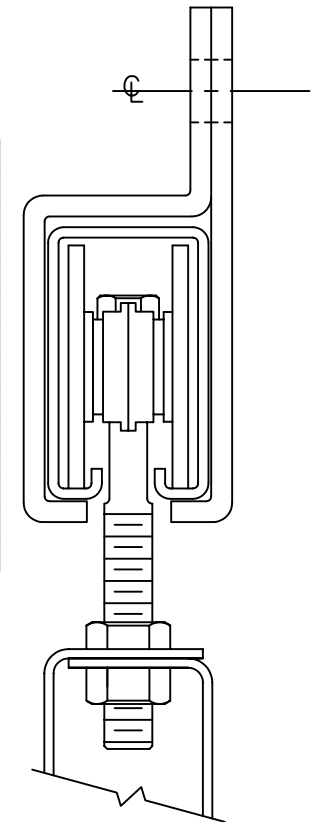
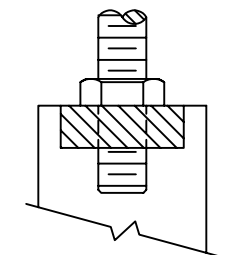


MATERIAL LIST	
*	FT. TRACK
*	CENTER BRACKET
*	JOINT BRACKET
1	CENTER STOP BRACKET
2	END BLINDS
2 PR	HANGERS
2	FLUSH PULLS
2	BOW HANDLES
8	BUMPER SHOES
2	GUIDE ROLLER STRIPS
2	END STOPS
2	STAY ROLLERS
1	FLOOR CENTER STOP

\* SUFFICIENT TRACK AND  
BRACKETS TO MATCH  
THE OPENING WIDTH.



STANDARD HEAD SECTION  
USING HANGERS



ALTERNATE HEAD SECTION  
USING TRUCKS