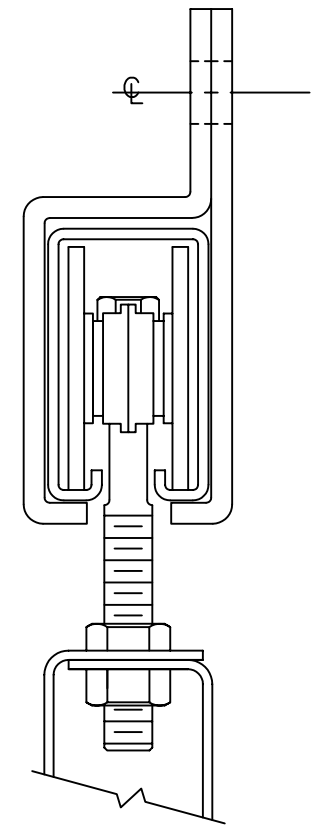
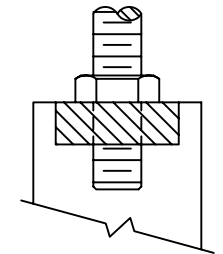


MATERIAL LIST	
*	FT. TRACK
*	CENTER BRACKET
*	JOINT BRACKET
2	END BLINDS
1 PR	HANGERS
1	FLUSH PULL
1	BOW HANDLE
4	BUMPER SHOES
1	GUIDE ROLLER STRIP
2	END STOPS
1	STAY ROLLER

\* SUFFICIENT TRACK AND BRACKETS TO MATCH THE OPENING WIDTH.



STANDARD HEAD SECTION USING HANGERS



ALTERNATE HEAD SECTION USING TRUCKS